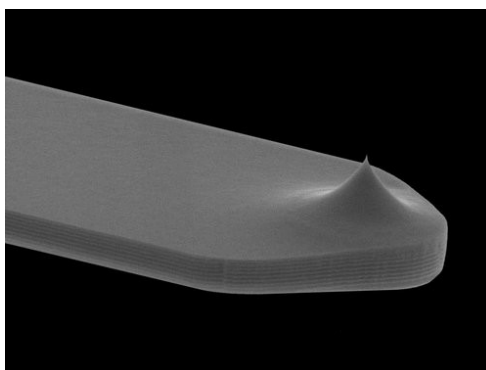
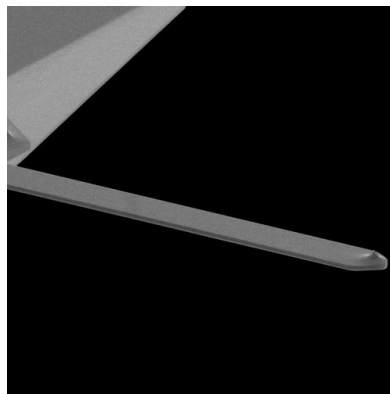
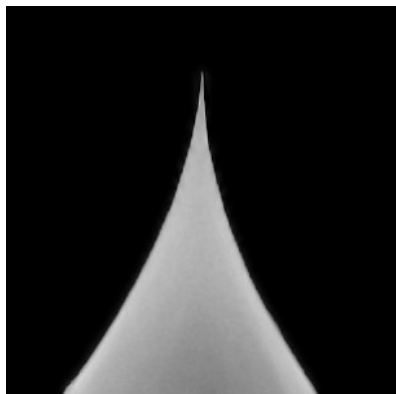


SCOUT 70HAR



カンチレバーの仕様

Parameter	Nominal	Range
Spring constant (N/m)	2	0.5-3.5
Resonant frequency (kHz)	70	55-85
Shape	Rectangular	
Length (μm)	225	223-227
Width (μm)	30	29-31
Thickness (μm)	2.5	2.0-3.0
Material	Silicon (n-type, Antimony)	
Resistivity (Ωcm)	0.02	0.015 - 0.025

チップの仕様

Parameter	Nominal	Range
Radius (nm)	5	<10
Height (μm)	7	5 - 8
Set back (μm)	7.5	6.5 - 8.5
Shape	Conical	
Cone Angle ($^\circ$)	< 15 $^\circ$ over the last 1 μm of the tip	
Material	Silicon (n-type, Antimony)	
Resistivity (Ωcm)	0.02	0.015 - 0.025